

Halloween Treasure Hunt

Instructions

Print out a copy of the picture cards and cut them out. You can laminate for extended use, or print onto thin card if a laminator is not available.

You can then hide the cards around the house or garden. Use tape or string to attach them to furniture or branches. Or hide under cushions or garden furniture.

Print out a copy of the checklists for each player or team of players. Then encourage the players to try to find all of the Halloween picture cards.

Once the child has found a card they can tick it off their checklist.

Who can find all of the cards in the shortest time?

Who can find the most cards in, say, five or ten minutes?

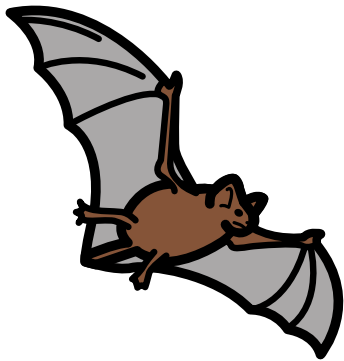


Halloween Treasure Hunt - checklists

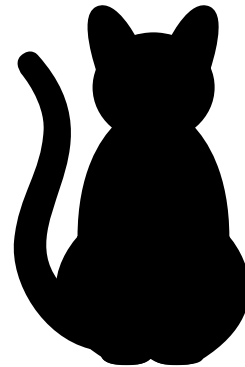
bat		skeleton	
black cat		spell	
broomstick		spider	
cauldron		vampire	
ghost		wand	
goblin		werewolf	
monster		wizard	
mask		witch	
pumpkin		witches hat	



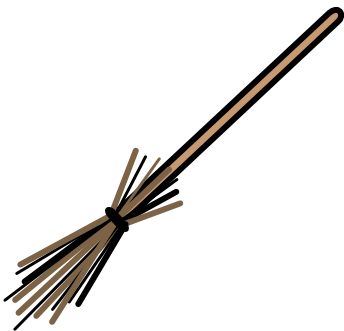
Halloween Treasure Hunt - Picture Cards



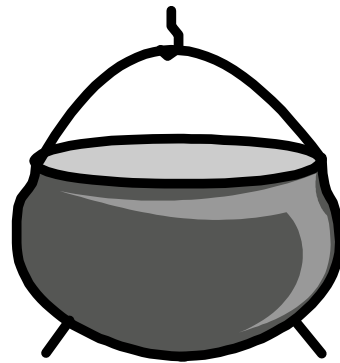
bat



black cat



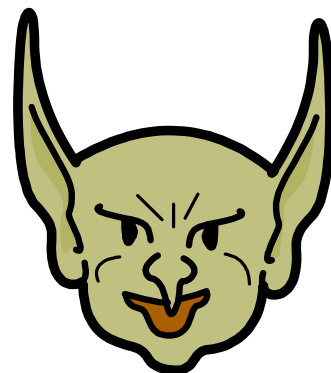
broomstick



cauldron



ghost



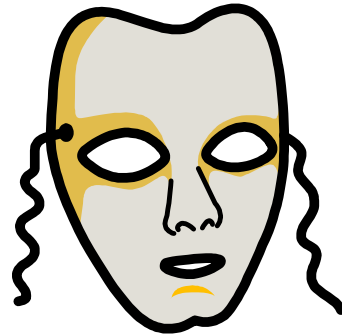
goblin



Halloween Treasure Hunt - Picture Cards



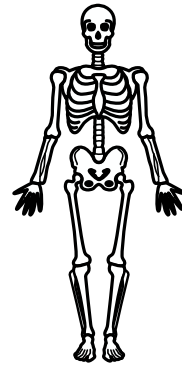
monster



mask



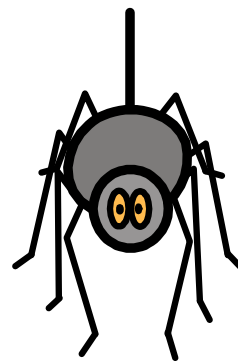
pumpkin



skeleton



spell



spider



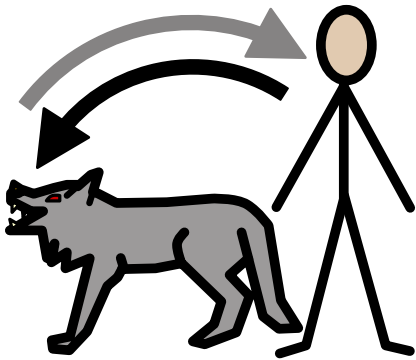
Halloween Treasure Hunt - Picture Cards



vampire



wand



werewolf



wizard



witch



witches hat